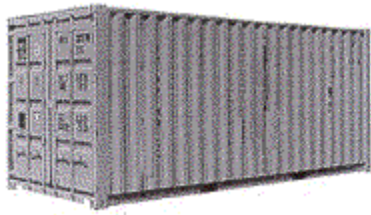




MODE TRANSPORTATION

Ocean Container Dimensions



STANDARD 20'

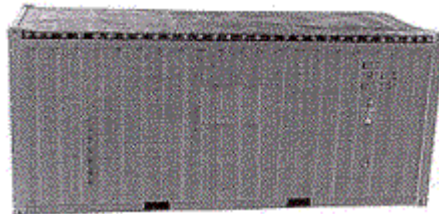
| | | |
|---------------|-----------------------|----------------------|
| INSIDE LENGTH | 19'4" | 5.89 m |
| INSIDE WIDTH | 7'8" | 2.33 m |
| INSIDE HEIGHT | 7'10" | 2.38 m |
| DOOR WIDTH | 7'8" | 2.33 m |
| DOOR HEIGHT | 7'6" | 2.28 m |
| CAPACITY | 1,172 ft ³ | 33.18 m ³ |
| TARE WEIGHT | 4,916 lb | 2,229 kg |
| MAX. CARGO | 47,999 lb | 21,727 kg |

STANDARD 40'

| | | |
|---------------|-----------------------|----------------------|
| INSIDE LENGTH | 39'5" | 12.01 m |
| INSIDE WIDTH | 7'8" | 2.33 m |
| INSIDE HEIGHT | 7'10" | 2.38 m |
| DOOR WIDTH | 7'8" | 2.33 m |
| DOOR HEIGHT | 7'6" | 2.28 m |
| CAPACITY | 2,390 ft ³ | 67.67 m ³ |
| TARE WEIGHT | 8,160 lb | 3,701 kg |
| MAX. CARGO | 59,040 lb | 26,780 kg |

HIGH CUBE 40'

| | | |
|---------------|-----------------------|----------------------|
| INSIDE LENGTH | 39'5" | 12.01 m |
| INSIDE WIDTH | 7'8" | 2.33 m |
| INSIDE HEIGHT | 8'10" | 2.69 m |
| DOOR WIDTH | 7'8" | 2.33 m |
| DOOR HEIGHT | 8'5" | 2.56 m |
| CAPACITY | 2,694 ft ³ | 76.28 m ³ |
| TARE WEIGHT | 8,750 lb | 3,968 kg |
| MAX. CARGO | 58,450 lb | 26,512 kg |

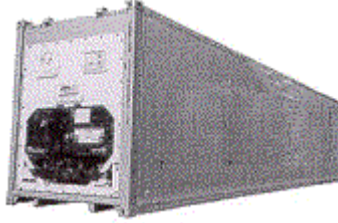


OPEN TOP 20' (upgraded also available)

| | | |
|---------------|-----------------------|----------------------|
| INSIDE LENGTH | 19'4" | 5.89 m |
| INSIDE WIDTH | 7'7" | 2.31 m |
| INSIDE HEIGHT | 7'8" | 2.33 m |
| DOOR WIDTH | 7'6" | 2.28 m |
| DOOR HEIGHT | 7'2" | 2.18 m |
| CAPACITY | 1,136 ft ³ | 32.16 m ³ |
| TARE WEIGHT | 5,280 lb | 2,394 kg |
| MAX. CARGO | 47,620 lb | 21,600 kg |

OPEN TOP 40'

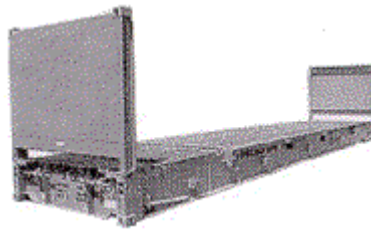
| | | |
|---------------|-----------------------|----------------------|
| INSIDE LENGTH | 39'5" | 12.01 m |
| INSIDE WIDTH | 7'8" | 2.33 m |
| INSIDE HEIGHT | 7'8" | 2.33 m |
| DOOR WIDTH | 7'8" | 2.33 m |
| DOOR HEIGHT | 7'5" | 2.26 m |
| CAPACITY | 2,350 ft ³ | 66.54 m ³ |
| TARE WEIGHT | 8,490 lb | 3,850 kg |
| MAX. CARGO | 58,710 lb | 26,630 kg |



REEFER 20'

REEFER 40'

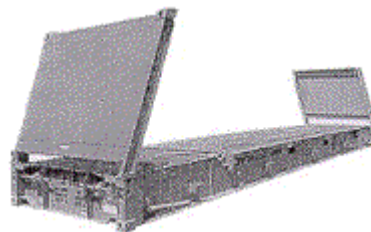
| | | | | |
|---------------|-----------------------|----------------------|-----------------------|----------------------|
| INSIDE LENGTH | 17'8" | 5.38 m | 37'8" | 11.48 m |
| INSIDE WIDTH | 7'5" | 2.26 m | 7'5" | 2.26 m |
| INSIDE HEIGHT | 7'5" | 2.26 m | 7'2" | 2.18 m |
| DOOR WIDTH | 7'5" | 2.26 m | 7'5" | 2.26 m |
| DOOR HEIGHT | 7'3" | 2.20 m | 7'0" | 2.13 m |
| CAPACITY | 1,000 ft ³ | 28.31 m ³ | 2,040 ft ³ | 57.76 m ³ |
| TARE WEIGHT | 7,040 lb | 3,193 kg | 10,780 lb | 4,889 kg |
| MAX. CARGO | 45,760 lb | 20,756 kg | 56,276 lb | 25,526 kg |



FLAT RACK 20'

FLAT RACK 40'

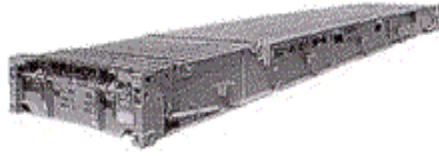
| | | | | |
|---------------|-----------|-----------|-----------|-----------|
| INSIDE LENGTH | 18'5" | 5.61 m | 39'7" | 12.06 m |
| INSIDE WIDTH | 7'3" | 2.20 m | 6'10" | 2.08 m |
| INSIDE HEIGHT | 7'4" | 2.23 m | 6'5" | 1.95 m |
| TARE WEIGHT | 5,578 lb | 2,530 kg | 12,081 lb | 5,479 kg |
| MAX. CARGO | 47,333 lb | 21,469 kg | 85,800 lb | 38,918 kg |



**FLAT RACK
COLLAPSIBLE 20'**

**FLAT RACK
COLLAPSIBLE 40'**

| | | | | |
|---------------|-----------|-----------|-----------|-----------|
| INSIDE LENGTH | 18'6" | 5.63 m | 39'7" | 12.06 m |
| INSIDE WIDTH | 7'3" | 2.20 m | 6'10" | 2.08 m |
| INSIDE HEIGHT | 7'4" | 2.23 m | 6'5" | 1.95 m |
| TARE WEIGHT | 6,061 lb | 2,749 kg | 12,787 lb | 5,800 kg |
| MAX. CARGO | 61,117 lb | 27,722 kg | 85,800 lb | 38,918 kg |



| | PLATFORM 20' | | PLATFORM 40' | |
|---------------|---------------------|-----------|---------------------|-----------|
| INSIDE LENGTH | 19'11" | 6.07 m | 40'0" | 12.19 m |
| INSIDE WIDTH | 8'0" | 2.43 m | 8'0" | 2.43 m |
| INSIDE HEIGHT | 7'4" | 2.23 m | 6'5" | 1.95 m |
| TARE WEIGHT | 6,061 lb | 2,749 kg | 12,783 lb | 5,798 kg |
| MAX. CARGO | 52,896 lb | 23,993 kg | 66,397 lb | 30,117 kg |